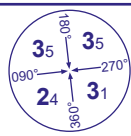
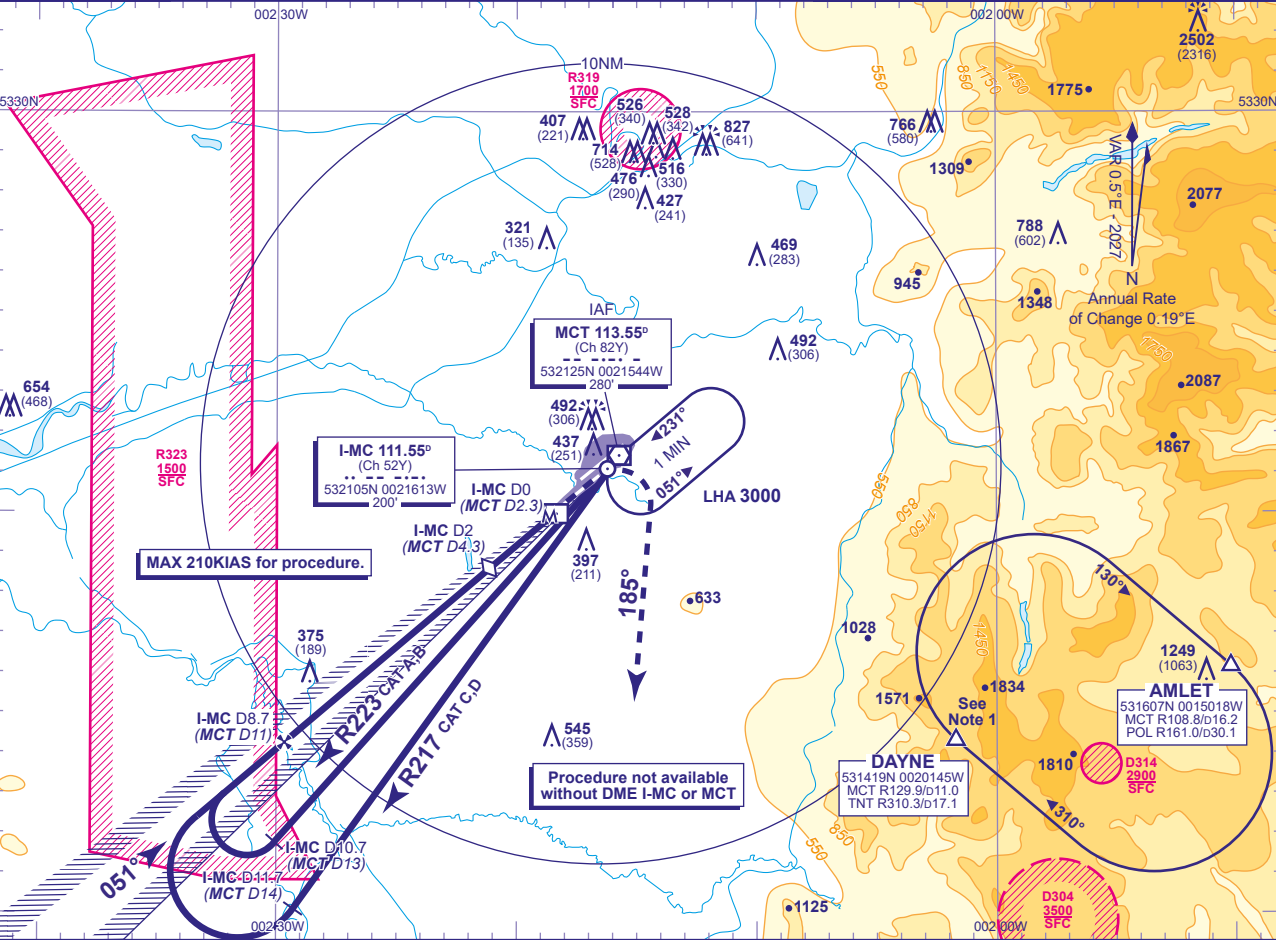


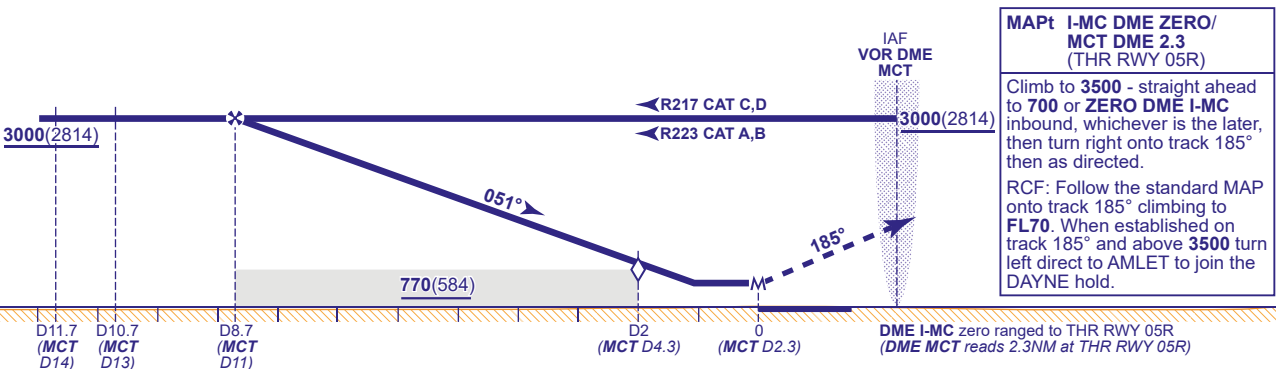
INSTRUMENT APPROACH STAFF - ICAO

MANCHESTER
LOC/DME (I-MC)
RWY 05R
(ACFT CAT A,B,C,D)

 MSA 25NM VOR MCT	APP	118.580, 135.005	MANCHESTER RADAR	AD ELEVATION	257	TRANSITION ALTITUDE 5000
		121.355	MANCHESTER DIRECTOR	THR ELEVATION	186	
	TWR	118.630, 119.405	MANCHESTER TOWER	OBSTACLE ELEVATION	2502 AMSL (2316) (ABOVE THR)	
		121.855, 121.705	MANCHESTER GROUND			
	ARRIVAL ATIS	128.180	MANCHESTER INFORMATION	BEARINGS ARE MAGNETIC		



RECOMMENDED PROFILE Gradient 5.2%, 320FT/NM							
DME I-MC(MCT)	8(10.3)	7(9.3)	6(8.3)	5(7.3)	4(6.3)	3(5.3)	2(4.3)(SDF)
ALT(HGT)	2780(2594)	2460(2274)	2140(1954)	1820(1634)	1510(1324)	1190(1004)	870(684)



Aircraft Category		A	B	C	D	Rate of descent	G/S KT	160	140	120	100	80
OCA (OCH)	Procedure	530(344)	530(344)	530(344)	530(344)		FT/MIN	850	750	640	530	420
VM(C)OCA (OCH AAL)	Total Area	790(533)	820(563)	1110(853)	1110(853)							

NOTE 1 DAYNE HOLD:- Limiting outbound distance MCT DME 16/TNT DME 14. Minimum holding level is FL70.
2 Procedure restricted to maximum 210KIAS.

CHANGE (12/25): MCT VOR RECALIBRATED. MAG VAR. HEADINGS. WAYPOINT RADIALS.